



Green Park

CHILLINGTON

THE PEARL - 3 BEDROOM HOUSE

PLOTS 4 & 5

The Pearl



Plots 4 5

Ground Floor

Kitchen/Dining
6.70 x 3.70m 21' 12" x 12' 3"

Family
5.60 x 3.60m 18' 4" x 11' 10"

Living
3.90 x 2.80m 12' 8" x 9' 0"

First Floor

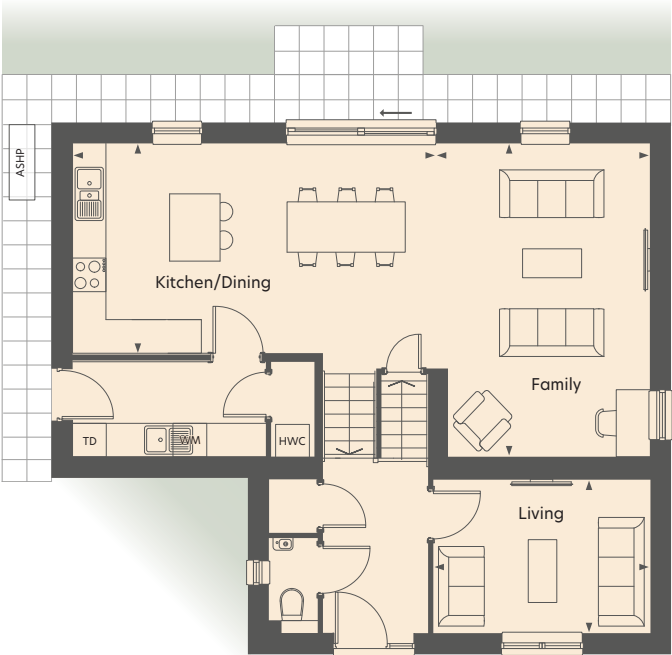
Bedroom 1
5.60 x 3.10m 18' 4" x 10' 1"

Bedroom 2
4.10 x 2.80m 13' 4" x 9' 0"

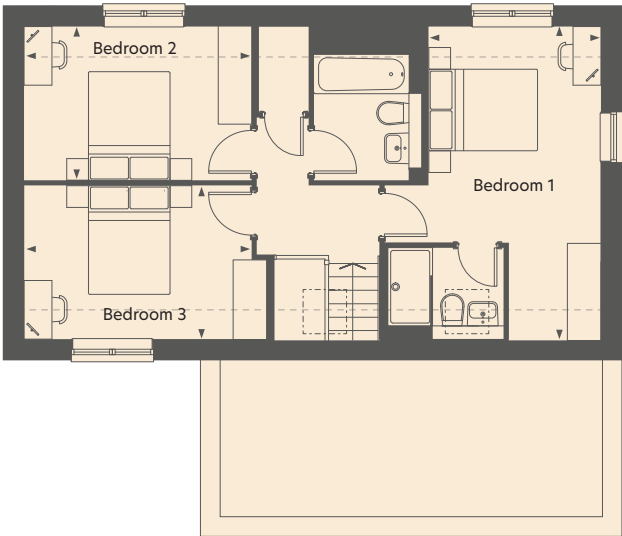
Bedroom 3
4.30 x 2.80m 14' 3" x 9' 0"

- - - - Sloped Roof
- . - . Rooflight
- ASHP Air Source Heat Pump
- HWC Hot Water Cylinder
- WM Space and plumbing for Washing Machine
- TD Space for Tumble Dryer

Ground Floor



First Floor



Plot 8 is handed. The position of the air source heat pump may differ for each plot, speak to a sales advisor for plot specific details. The garden layouts are for illustrative purposes only. Please consult the sales advisor for details specific to your plot. The Pearl floor plan details are intended to give a general indication of the development and do not form part of any contract. Acorn Property Group reserves the right to alter any part of the development, specification or floor layout at any time. The dimensions are maximum and approximate and may vary based on the internal finish. Dimensions are to the widest part of each room scaled down from architects plans. Furniture measurements should only be taken from the completed property. These details are believed to be correct but neither the agent nor Acorn Property Group accept the liability whatsoever for any misrepresentation made either in these details or orally. Furniture is shown for indicative purposes only. Fitted wardrobes and washing machines are not included. Computer generated image of The Pearl for illustrative purposes only. January 2025.