



Green Park

CHILLINGTON

THE PRIMROSE - 4 BEDROOM HOUSE

PLOTS 1, 2 & 3

The Primrose



Plots **1** **2** **3**

Ground Floor

Kitchen/Dining/Family
7.70 x 5.20m 25' 4" x 17' 2"

Living
4.30 x 3.60m 14' 0" x 11' 9"

First Floor

Bedroom 1
6.50 x 3.60m 21' 4" x 11' 9"

Bedroom 2
4.40 x 2.80m 14' 6" x 9' 2"

Bedroom 3
3.60 x 3.30m 11' 10" x 10' 10"

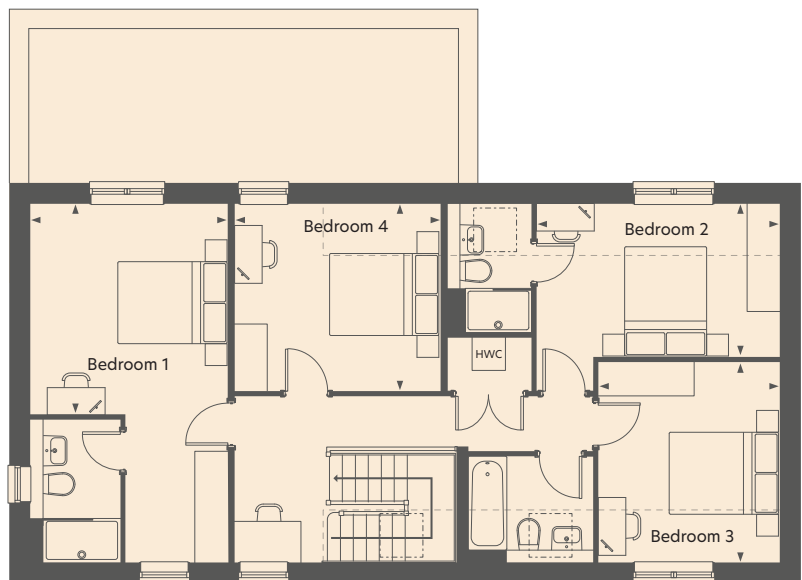
Bedroom 4
3.70 x 3.40m 12' 3" x 11' 1"

---	Sloped Roof
- - -	Rooflight
ASHP	Air Source Heat Pump
HWC	Hot Water Cylinder
WM	Space and plumbing for Washing Machine
TD	Space for Tumble Dryer

Ground Floor



First Floor



Plot 3 is handed. The position of the air source heat pump may differ for each plot, speak to a sales advisor for plot specific details. The garden layouts are for illustrative purposes only. Please consult the sales advisor for details specific to your plot. The Primrose floor plan details are intended to give a general indication of the development and do not form part of any contract. Acorn Property Group reserves the right to alter any part of the development, specification or floor layout at any time. The dimensions are maximum and approximate and may vary based on the internal finish. Dimensions are to the widest part of each room scaled down from architects plans. Furniture measurements should only be taken from the completed property. These details are believed to be correct but neither the agent nor Acorn Property Group accept the liability whatsoever for any misrepresentation made either in these details or orally. Furniture is shown for indicative purposes only. Fitted wardrobes and washing machines are not included. Computer generated image of The Primrose for illustrative purposes only. January 2025.