

# T8 - FLOORPLANS

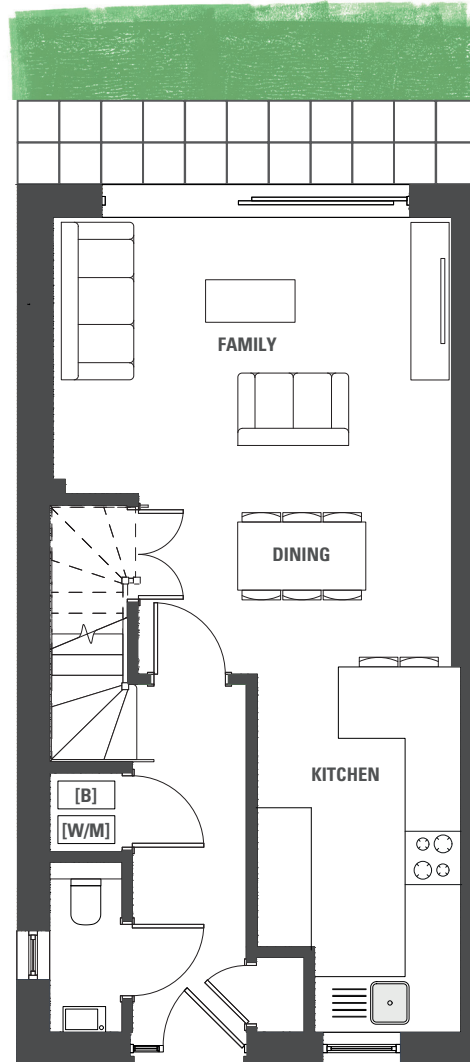
# T8

## 4 BEDROOM TOWNHOUSE

### Plot Numbers

30, 31, 92-95, 111-116, 140-145,  
156 & 157

- Open plan kitchen/dining/family room
- Sliding doors onto the garden from family area
- Under stairs storage
- Separate living room on first floor
- Garage and two allocated parking spaces



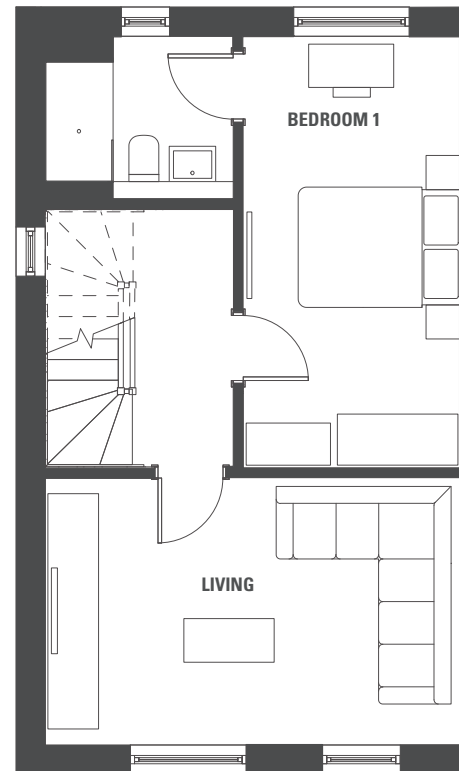
### Dimensions

#### Ground Floor

- KITCHEN**  
4.20m x 2.30m  
13'9" x 7'7"
- DINING**  
3.60m x 2.10m  
11'10" x 6'11"
- FAMILY**  
4.60m x 3.20m  
15'1" x 10'6"

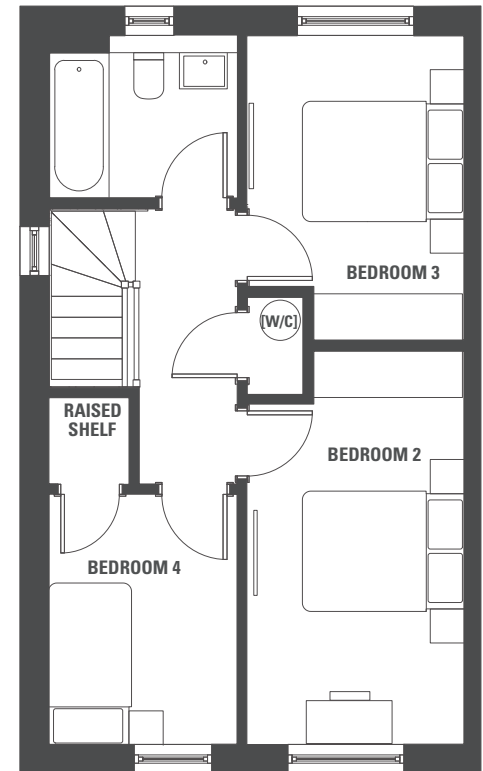
#### First Floor

- LIVING**  
4.80m x 3.00m  
15'9" x 9'10"
- BEDROOM 1**  
5.00m x 2.50m  
16'5" x 8'2"



#### Second Floor

- BEDROOM 2**  
4.50m x 2.50m  
14'9" x 8'2"
- BEDROOM 3**  
3.50m x 2.50m  
11'6" x 8'2"
- BEDROOM 4**  
2.10m x 1.90m  
6'11" x 6'3"



#### KEY:

- [B] BOILER
- [W/M] SPACE FOR WASHING MACHINE
- [W/C] WATER CYLINDER

Please note: Plots 141, 143 & 145 are handed. Ask for more information.  
Windows may differ on specific plots. Speak to a sales advisor for more information.

These details are intended to give a general indication of the development and do not form part of any contract. Acorn Property Group reserves the right to alter any part of the development, specification or floor layout at any time. The dimensions are maximum and approximate and may vary based on the internal finish. Dimensions are to the widest part of each room scaled down from architects plans. Furniture measurements should only be taken from the completed property. These details are believed to be correct but neither the agent nor Acorn Property Group accept the liability whatsoever for any misrepresentation made either in these details or orally. Furniture is shown for indicative purposes only. Fitted wardrobes and washing machine are not included. Computer generated image for illustrative purposes only. Gardens/terraces are shown for illustrative purposes and are not plot specific. 2021

THE  
**OLD  
PRINTS  
WORKS**

**4 BEDROOM  
TOWNHOUSE**

Plots 30, 31, 92-95,  
111-116, 140-145,  
156 & 157

