

# The Mendip

3 1/4 BEDROOM DETACHED

195.10 SQM ( 2.100 SQFT)

PLOT: 7

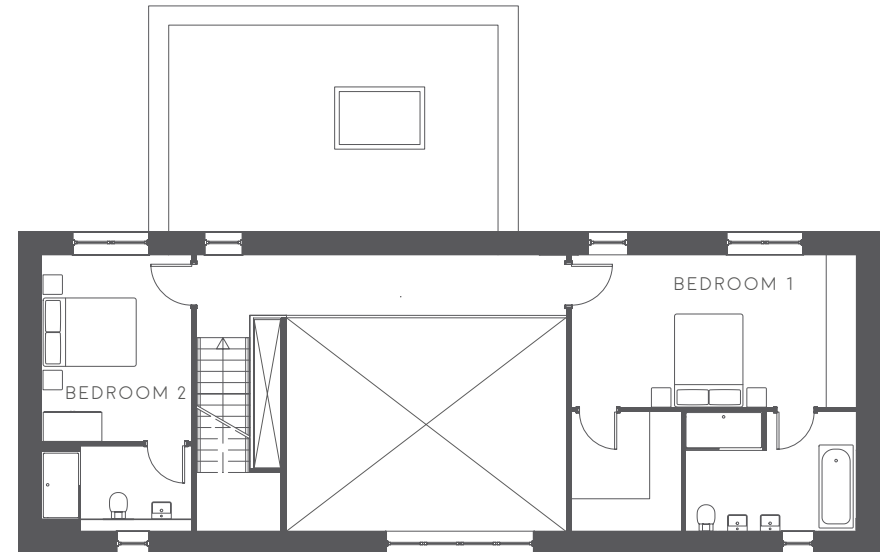


## GROUND FLOOR

<b>KITCHEN/DINING/FAMILY</b>	10.0M X 5.7M (32' 10" X 18' 8")
<b>LIVING ROOM</b>	4.6M X 4.3M (15' 1" X 14' 1")
<b>BEDROOM 3</b>	3.8M X 3.1M (12' 6" X 10' 2")
<b>SNUG/BEDROOM 4</b>	3.8M X 3.5M (12' 6" X 11' 6")

## FIRST FLOOR

<b>BEDROOM 1</b>	5.9M X 3.1M (19' 4" X 10' 2")
<b>BEDROOM 2</b>	3.8M X 3.1M (12' 6" X 10' 2")



### HOUSETYPE E

**A** Air Source Heat Pump Infrastructure    **ASHP** Air Source Heat Pump    **RL** Roof light    **WM** Space and plumbing for washing machine    **TD** Space for tumble dryer