



# HONEYBOURNE HOUSE

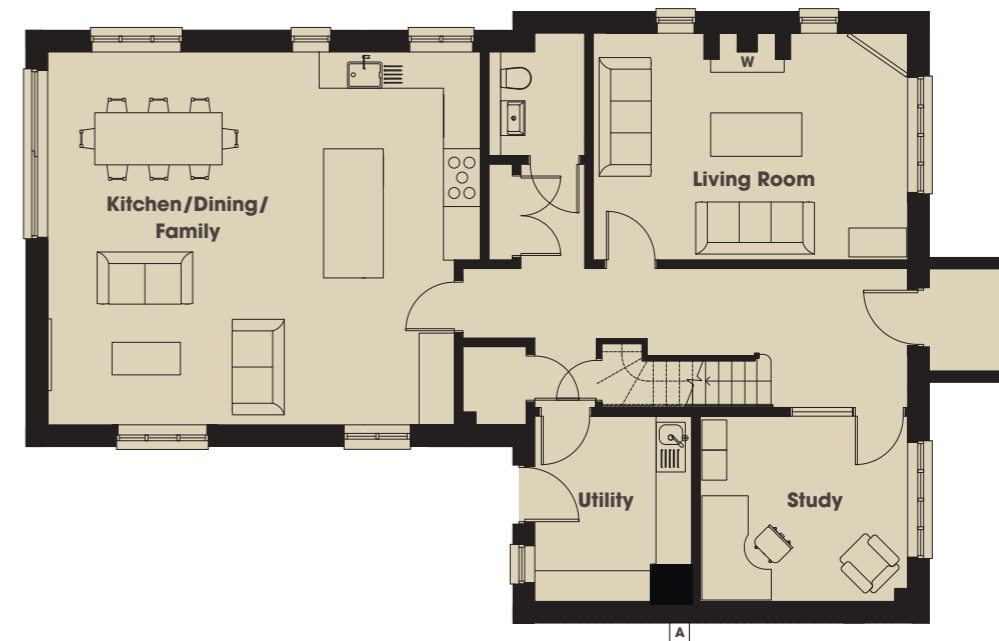
5 BEDROOMS | 235 SQM | 2,530 SQFT



Computer generated image of Honeybourne House.



## GROUND FLOOR



## FIRST FLOOR



### GROUND FLOOR

#### Kitchen/Dining/Family

7.53 x 6.49m 24' 8" x 21' 4"

#### Living Room

5.82 x 3.97m 19' 1" x 13' 1"

#### Study

3.63 x 3.25m 11' 11" x 10' 8"

**A** Air Source Heat Pump

**W** Woodburner

### FIRST FLOOR

#### Bedroom 1

4.19 x 3.40m 13' 9" x 11' 2"

#### Bedroom 2

3.93 x 3.25m 12' 11" x 10' 8"

#### Bedroom 3

4.43 x 3.88m 14' 7" x 12' 9"

#### Bedroom 4

3.72 x 3.04m 12' 2" x 10' 0"

#### Bedroom 5

3.68 x 3.04m 12' 1" x 10' 0"