

# The Polden

4 BEDROOM DETACHED

143.4 SQM (1543 SQFT)

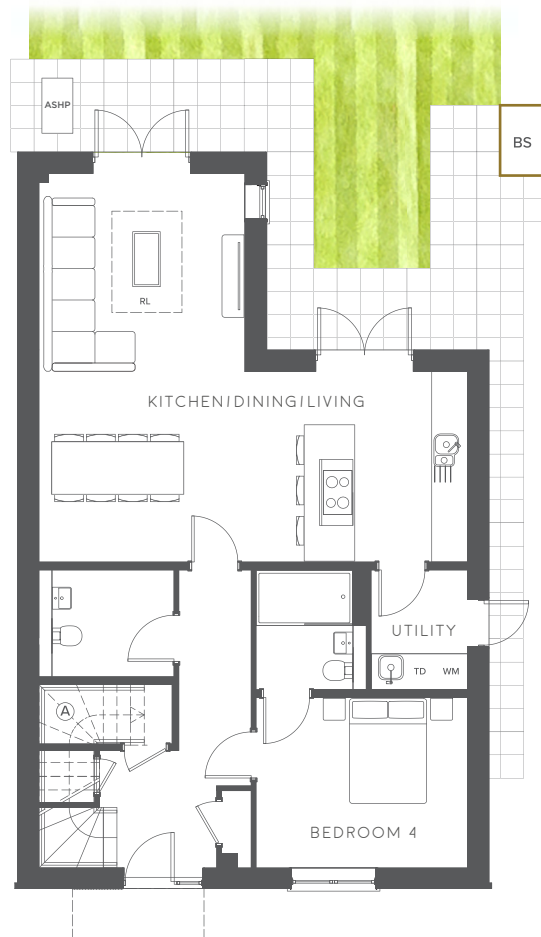
PLOT: 6



## GROUND FLOOR

KITCHEN/DINING/LIVING 7.8M X 7.1M (25' 7" X 23' 4")

BEDROOM 4 3.8M X 3.1M (12' 6" X 10' 2")

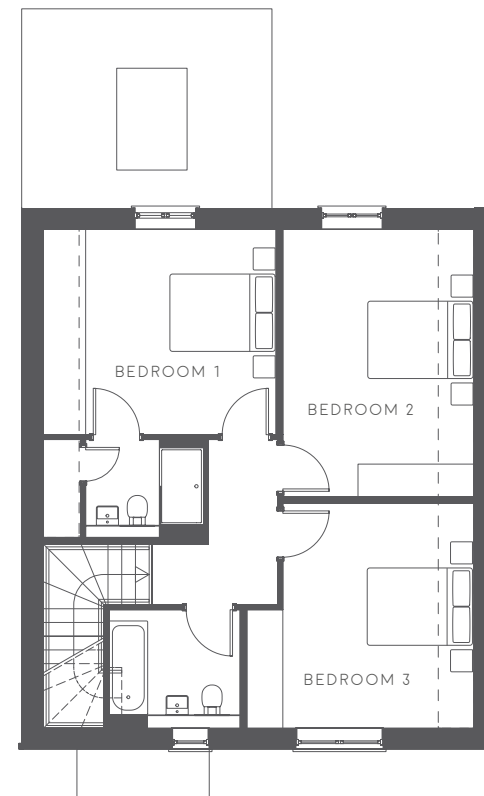


## FIRST FLOOR

BEDROOM 1 4.2M X 3.7M (13' 9" X 12' 2")

BEDROOM 2 4.8M X 3.5M (15' 9" X 11' 6")

BEDROOM 3 4.1M X 4.1M (13' 5" X 13' 5")



### HOUSETYPE D